



# ÇEK

‘ÇAĞDAŞ EĞİTİM COOPERATIVE’



# ÇEK

‘ÇAĞDAŞ EĞİTİM COOPERATIVE’



THE IMMATERIAL LEGACY I'M LEAVING TO YOU DOES NOT  
CONSIST OF RELIGIOUS VERSES, DOGMAS OR FROZEN,  
STABLE RULES FOR THAT MATTER .MY IMMATERIAL  
LEGACY IS SCIENCE AND REASON.

*Gazi M. Kemal*





‘OUR FOUNDATION’

The first spark that ignited our Cooperative occurred in a time when both the secular structure of the country and the revolutionary principles of Kemal Atatürk have been suffering from severe attrition. In a time when the laws and legislations regarding national education and the unity of education have been ignored, thus creating a perfect habitat for the educational institutions who provide out-dated, backward education to flourish, and also when the state has been rendered ineffective, misguided and insufficient.

A group of intellectuals -23 founding members-, who have a sense of responsibility for the society, founded Çağdaş Eğitim Kooperatifi (ÇEK) (Modern Education Cooperative) on 25 July 1995, in the light of the idea that education is the core around which everything else revolves, along with the aim of becoming an active player in the course of providing remedies for the issues in education.





‘ W H Y C O O P E R A T I V E ? ’

The cooperative model has been chosen specifically in order for the democratic process to be implemented along with the ability to perform self-assessment. The implementation of the democratic process within the institution accompanied with the ability to self-assess whenever required and the equalitarian representation of every single individual within the institution have made **‘the cooperative model’** ideal.

The cooperative does not distribute profits to the shareholders. The profit the institution earns is put to use in new investment areas, in improving the working conditions of the employees, in raising the number of scholarships being given, and finally in providing financial support to ongoing responsibility projects.

The income of the cooperative consists of the intake from the educational facilities and high education dorms, from donations in all forms, scholarships, wreath services, social and cultural events and partnership fees.





‘WHAT SORT OF A COOPERATIVE?’

The cooperative is a unique organization model that rises on the tradition of the collective labour which is formed by people with differing political orientations, banding together in a voluntary fashion for the sole purpose of responsible participation in the course of education.

The cooperative establishes educational institutions and operates them. It also develops a sense of awareness for those who become a part of the cooperative through organizing cultural, social and educational events.

It shares with the society its perspective in terms of basic human rights and fundamental freedoms.

Making this unique model widespread across the country and flourishing our community's sentience through social responsibility projects are among our cooperative's main aims as well.





‘OUR FOUNDATIONAL MISSION’

To contribute to our country’s bright future by bringing up modern, secular, democratic free thinkers who are committed to the principles and the revolutionary vision of Mustafa Kemal Atatürk.

By organizing social and cultural events, to equip the society with awareness and sentience towards education related matters.





‘ O U R V I S I O N ’

- ✔ To establish educational institutions and their complementary facilities.
- ✔ To help students start a life, provide them with shelter and educate the ones who are successful, impoverished and who are in accordance with our foundational values.
- ✔ To make our students, parents, staff and members internalize philosophy through organizing educational, social and cultural events.
- ✔ To create policies on a national scale to achieve our goals and to collaborate with other institutions that share similar aims as we do in case of necessity.
- ✔ To enhance, improve and update our institutional structure.
- ✔ To strengthen and perpetuate our financial power







10 BASIC PRINCIPLES AND THE CONSTITUTION OF OUR COOPERATIVE

- 1) To safeguard both the revolutionary vision and principles of Atatürk, the unity in education, scientific and secular education, and the equality of education in terms of both option viability and opportunity and to combat the opposing practices.
- 2) To found exemplary educational institutions, to establish and operate student dormitories, to provide free-of-charge services for the hardworking and impoverished pupils.
- 3) In the operating and administration processes of its institutions the principle of democracy is put to use.
- 4) The right to have and practice political agendas and opinions for every single individual granted prohibits everyone from spreading and dictating their own political ideology within its institutions.
- 5) Those that have roles in the Boards of Directors and Audit don't get paid by the cooperative.

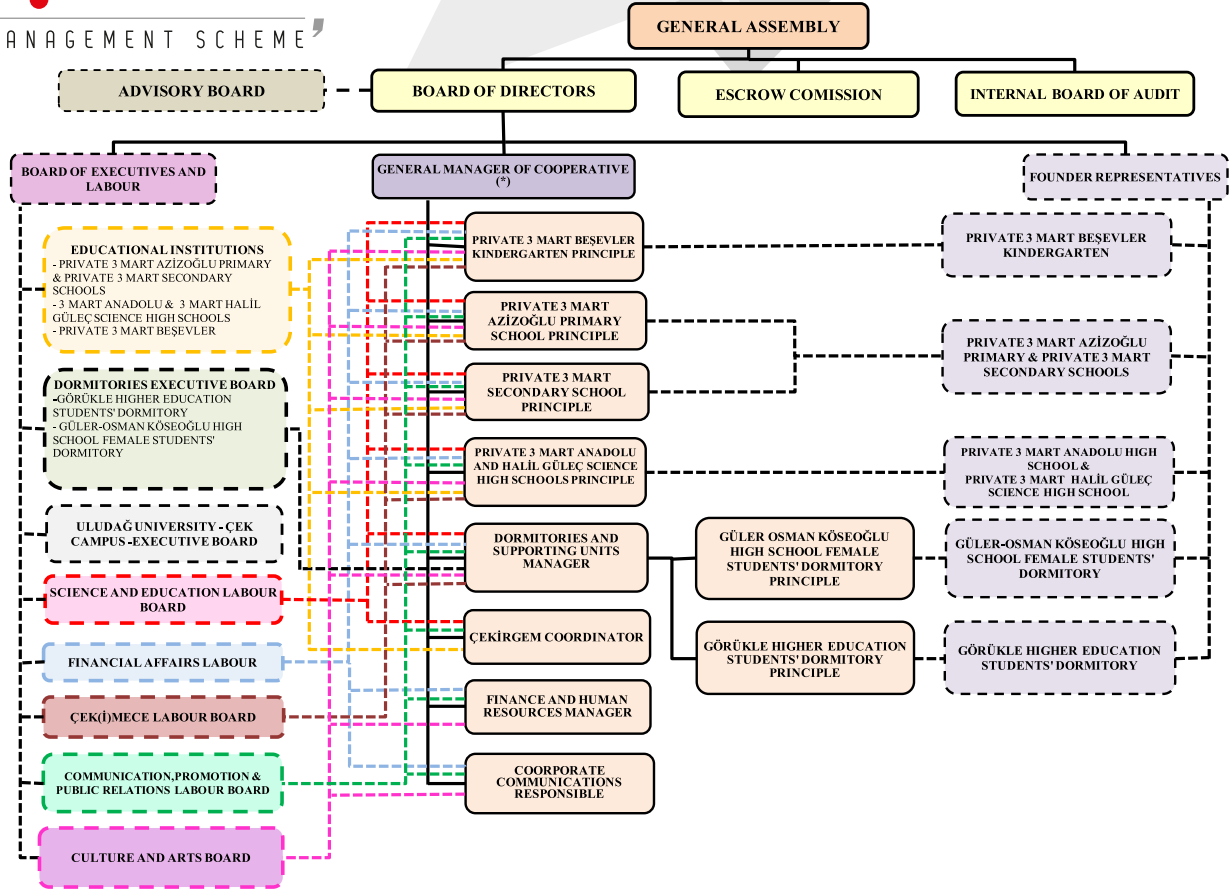




‘ 10 BASIC PRINCIPLES AND THE CONSTITUTION OF OUR COOPERATIVE ’

- 6) The members in the Board of Directors and the Internal Board of Audit envision themselves responsible for spreading and promoting the philosophy and the principles of the organization, along with providing resources for it.
- 7) The Board of Directors tries to come to verdicts after a debate is organized and unanimity is reached. The Board is attentive not to discuss the final verdicts openly outside the institution.
- 8) The members of the Board of Directors and the International Board of Audit along with the grantors do not expect tangible reciprocity from the cooperative.
- 9) The members and the employees do not behave in ways that may harm the cooperative financially and morally.
- 10) The employees are chosen among people who share the same vision and ambition with the institution.







‘OUR MANAGEMENT STYLE’

The members of the departments of The Board of Directors and the Internal Board of Audit are elected every two years. The boards, which embrace the society as a whole, perform their duties in complete voluntary fashion, without any sort of expectation in return, solely focused on the benefits to the public and society.

The departments’ regular meetings occur every two weeks and the verdicts are reached through unanimous vote. Every department possesses an Executive Committee in which board members and the principles of the institutions take up roles. Solutions to some problems are found here in these committees, before bringing the issues up to the Board of Directors.

The Labour Committee directs and monitors all institutions’ works on education, communication, finance, culture, and art.

Our investments are carried out by the entrust commission, which is staffed by technical and financial experts, after the Board of Directors’ approval.





OUR MANAGEMENT STYLE

|  |              |
|--|--------------|
| <b>The number of partners/members</b>                                | <b>1773</b>  |
| <b>The number of employees</b>                                       | <b>225</b>   |
| <br>   |              |
| <b>The number of students</b>  | <b>1.628</b> |
| Private 3 Mart Beşevler Kindergarten                                 | 165          |
| Private 3 Mart Azizoğlu Primary School                               | 467          |
| Private 3 Mart Azizoğlu Secondary School                             | 443          |
| Private 3 Mart Halil Güleç Science High School/Anatolian High School | 242          |
| Güler-Osman Köseoğlu High School Education                           |              |
| Dormitory for Female Students  | 60           |
| Görükle Higher Education Student Dormitory                           | 251          |

(\*) The statistics belong to the data obtained from the 2019-2020 Academic Year



To educate and accomodate individuals that,

- ✓ practice scientific methods, question and find solutions.
- ✓ use information technologies effectively.
- ✓ are enterprising, think critically and creatively, have a developed awareness regarding the environment.
- ✓ are self-aware in terms of personal strengths and apt to teamwork.
- ✓ are aware of their communal responsibilities, are respectful to human rights.
- ✓ have a keen eye on the global advancements, possess universal values.
- ✓ are enriched with aesthetical and artistic values.
- ✓ have both the understanding and the necessary skills democracy calls for.



## OUR SOCIAL RESPONSIBILITIES

- ✓ To promote the democratic perception along with the idea of democratic life,
- ✓ To remind social and constitutional rights and responsibilities,
- ✓ To raise awareness about the environment and to promote humanitarian perspectives,
- ✓ To reiterate the importance of the principle of secularism, the judicial structure and the separation of powers,
- ✓ Through the implementation of social responsibility projects,
  - To provide contribution to both the education and to the social lives of female children, and to make the public conscious of the issue,
  - To carry out exemplary work in order to eliminate the inequality of equipment and education between different educational institutions and to establish equal opportunities in education,
  - To develop ideas about contemporary education, to put these ideas into practice and share them with the educational decision makers,
  - To lead the society access to culture and arts by organising cultural activities.

# ÇEK

‘OUR SOCIAL RESPONSIBILITY PROJECTS’

 **Kır Çiçekleri**  
Okusun Diye

**ÇEK**  **MECE**

**ÇEKİRGEM**

  
GÖRÜKLE CULTURAL CENTRE





# ÇEK

‘K I R Ç İ Ç E K L E R İ ’

Kır Çiçekleri  
Okusun Diye

(Wildflowers)

We provide scholarships to our female high school students who come from rural areas of Bursa and who would not be able to continue their education due to their deprived economic and social backgrounds. The scholarships include accommodation, food, books, stationary, social and cultural activities etc.



# ÇEK

‘ Ç E K ( İ ) M E C E ’

## ÇEK MECE

(A Collective Labour Project)

In order to install the collective work mentality, our voluntary teachers, students and parents work together to improve the physical conditions of preschools, primary and secondary schools in rural parts of Bursa. We also share our experience with local students, teachers and parents.





‘GÖRÜKLE CULTURAL CENTRE’



Since 2005 the centre has offered cultural and art-themed activities to students and local people. The centre includes a hall with 250 seats, a cinema with 120 seats and two reception areas.





## **ÇEK Innovation-Reform-Development Center**

By taking the advantage of our experience gained from our educational institutions, we conduct research and development in education. Together with our Board of Science and Education, we make recommendations to decision makers and implementers in their decision making in educational policies nationwide.





‘OUR SCHOLARSHIP POLICY’

ÇEK has provided thousands of children with access to education who wouldn't otherwise be able to continue their education due to deprived economic and social background.

Our aim is to give more students these opportunities through the ÇEK scholarships.

“**KIR ÇİÇEKLERİ OKUSUN DİYE**” (In order for Wildflowers to be able to go to school) is our social responsibility project. Within this project our students receive 100 % scholarship. The same policy will be applied to our similar dormitories to be established.

In our Görükle Higher Education Student Dormitory, 25% of students receive an ‘accommodation and food’ scholarship. The rates of our education scholarship vary from 18% to 40%.





OUR EDUCATIONAL  
INSTITUTIONS AND DORMITORIES

## **EDUCATIONAL INSTITUTIONS**

Private 3 Mart Beşevler Kindergarten  
Private 3 Mart Azizoğlu Primary School  
Private 3 Mart Secondary School  
Private 3 Mart Anatolian High School  
Private 3 Mart Halil Güleç Science High School

## **DORMITORIES**

Güler-Osman Köseoğlu High School Female Students' Dormitory  
Görükle Higher Education Students' Dormitory



# ÇEK

PRIVATE 3 MART BEŞEVLER KINDERGARTEN

In 2003, donations of individuals and institutions made the construction of our kindergarten with its seven classrooms and a capacity to hold 165 children possible. This is ÇEK's first educational institution. The land for the building was donated by "Bizim Kent Yapı Cooperative"



# CEK

PRIVATE 3 MART AZIZOĞLU PRIMARY  
AND SECONDARY SCHOOLS



Our Primary and Secondary Schools were opened in the academic year of 2010-2011. Within the framework of a protocol signed with Uludağ University and by the donations of the late Mehmet Azizoğlu and other benefactors the school building was constructed onto a 19 thousand square meters, including 44 classrooms and with a capacity to hold 1040 students.





# CEK

PRIVATE 3 MART ANATOLIAN HIGH SCHOOL  
PRIVATE 3 MART HALİL GÜLEÇ SCIENCE HIGH SCHOOL

Within the framework of a protocol signed with Uludağ University, our high schools were opened in the academic year of 2017-2018. They consist of 25 classrooms and a capacity to hold 400 students.



# ÇEK

GÜLER-OSMAN KÖSEOĞLU HIGHSCHOOL  
FEMALE STUDENTS' DORMITORY

The dormitory which can hold 80 students was established on 29th October 2014 and female students (Kır Çiçekleri) from rural parts of Bursa stay in this dormitory.



# ÇEK

GÖRÜKLE HIGHER EDUCATION  
STUDENTS' DORMITORIES

The dorms constructed with the contributions of Görükle Municipality happened to be the first establishments of Modern Educational Cooperative have been in service since 1998 with a capacity of accommodating 290 students.





‘OUR WREATH SERVICE’

Any wreath or special occasions card (condolences, mother’s day, father’s day, teacher’s day, birthday) sent by ÇEK, makes free schooling and accommodation possible for more students.



ÇELENK HİZMETİ



SİPARİŞ HATTI

444 2 235

444 2 ÇEK

Faks: 483 36 36

[celenk@cagdas.org.tr](mailto:celenk@cagdas.org.tr)  
[www.cagdas.org.tr](http://www.cagdas.org.tr)



YAPI KREDİ BANKASI

Cumhuriyet Şubesi **Şube Kodu** 452  
**IBAN:** TR62 0006 7010 0000 0068 6525 75

TÜRKİYE İŞ BANKASI

Bursa Ticari Şubesi **Şube Kodu** 2198  
**IBAN:** TR30 0006 4000 0012 1980 0261 79

GARANTİ BANKASI

Görükle Şubesi **Şube Kodu** 687  
**IBAN:** TR89 0006 2000 6870 0006 2947 67

HALK BANKASI

Bursa Şubesi **Şube Kodu** 278  
**IBAN:** TR61 0001 2009 2780 0043 0001 44



# ÇEK

‘ ÇEK ACROSS TURKEY ’



We are still working in order to establish more cooperatives in other three cities besides the ones founded in Çanakkale, Mersin and Izmir to implement our aim across the country in unity.





‘SOCIAL COOPERATIVE’

## WHY ARE WE A SOCIAL COOPERATIVE?

- ✓ We work for the educational benefits of the public.
- ✓ We don't distribute shares to our partners.
- ✓ Our multiple shareholders comprise of private and legal entities.
- ✓ We use the profit we make back into our work.
- ✓ Our structure and social responsibility projects are applicable all across Turkey.





‘ INVITATION TO OUR COLLECTIVE LABOUR (IMECE) ’

The Modern Educational Cooperative (ÇEK) has set out on this path with the aim to build exemplary educational institutions from kindergarten to university. Its ideas are based on modern, secular and democratic beliefs in order to educate the students to be freethinking individuals who believe in Atatürk’s principles and reforms. It also aims to raise public awareness and sensibility on education.

We invite everybody to have a share in our collective labour (IMECE) regardless of their different world views but who are modern, secular and democratic in order to,

- ✓ leave our future in safe hands,
- ✓ raise public awareness,
- ✓ keep our “KIR ÇİÇEKLERİ” flourishing
- ✓ provide equal opportunities in education.





# ÇEK

‘ÇAĞDAŞ EĞİTİM COOPERATIVE’